

# Theory Quiz

## Keyboard Level 2 (Practice)

### Notes & Rests

Complete each statement below. Draw the symbol of the note given in the box, then fill in the number of beats it gets in the blank.

A half note

gets \_\_\_\_\_ beats

A quarter note

gets \_\_\_\_\_ beats

A whole note

gets \_\_\_\_\_ beats

A dotted half note

gets \_\_\_\_\_ beats

A quarter rest

gets \_\_\_\_\_ beats

A whole rest

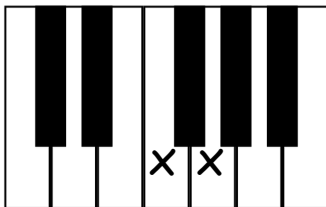
gets \_\_\_\_\_ beats

A half rest

gets \_\_\_\_\_ beats

### Intervals

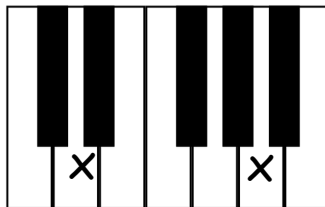
Write the name of each interval on the line below each picture (ex. 2nd, 3rd, etc.).



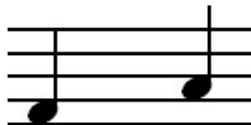
\_\_\_\_\_



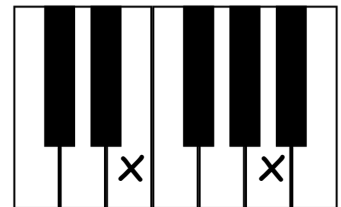
\_\_\_\_\_



\_\_\_\_\_



\_\_\_\_\_



\_\_\_\_\_


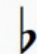







\_\_\_\_\_

## Symbols and Definitions

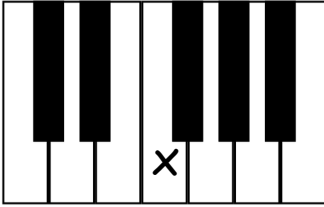
---

Circle the correct answer.

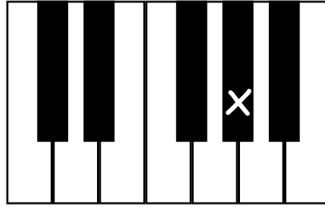
- 1.a.  is the symbol for Piano      Fast      Forte  
b.      and means      Play quickly      Play loudly      Play softly
- 2.a.  is the symbol for Natural      Sharp      Flat  
b.      and means      Lower 1/2 step      Raise 1/2 step      Cancel sharp or flat
- 3.a.  is the symbol for Fermata      Staccato      Legato  
b.      and means      Short, detached      Quickly      Smooth, connected
- 4.a.  is the symbol for Natural      Sharp      Flat  
b.      and means      Lower 1/2 step      Raise 1/2 step      Cancel sharp or flat
- 5.a.  Is the symbol for Forte      Fast      Piano  
b.      and means      Play prettily      Play softly      Play loudly
- 6.a.  is the symbol for Natural      Sharp      Flat  
b.      and means      Lower 1/2 step      Raise 1/2 step      Cancel sharp or flat
- 7.a.  is the symbol for Fermata      Legato      Staccato  
b.      and means      Short, detached      Slowly      Smooth, connected

# Key Names

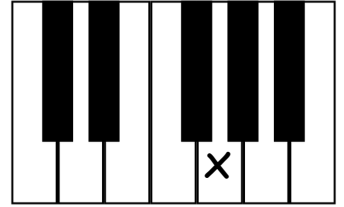
Write the name of each key on the line below each picture.



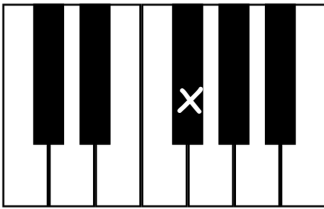
\_\_\_\_\_



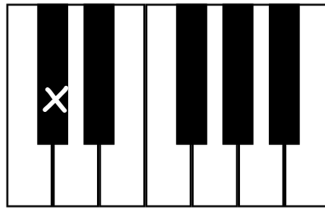
\_\_\_\_\_



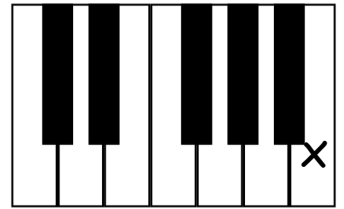
\_\_\_\_\_



\_\_\_\_\_



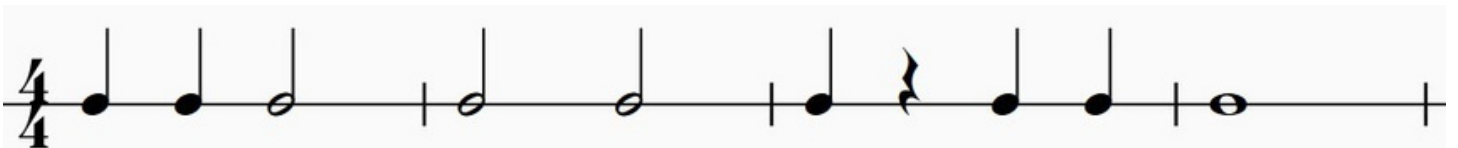
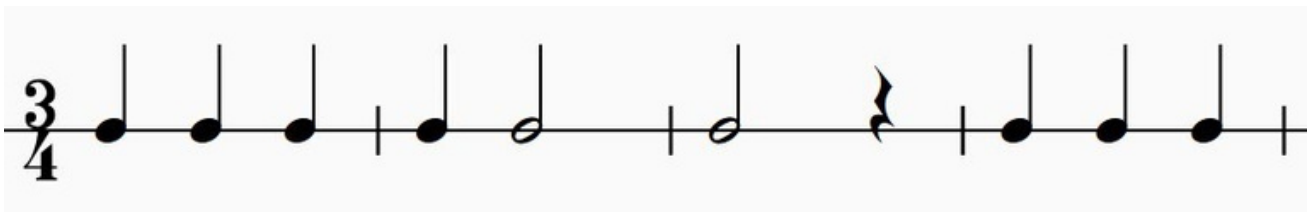
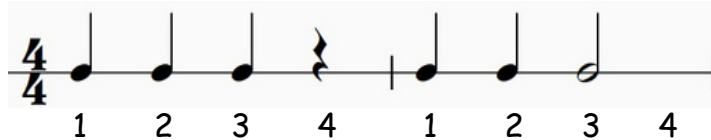
\_\_\_\_\_



\_\_\_\_\_

# Counting

Write in the counting below each line. Example of correct answers:

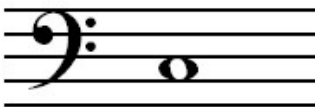


# Note Names

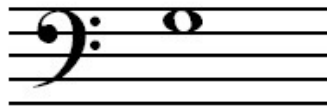
Write the name of the note on the line under each picture.



\_\_\_\_\_



\_\_\_\_\_



\_\_\_\_\_



\_\_\_\_\_



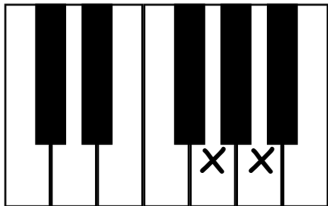
\_\_\_\_\_



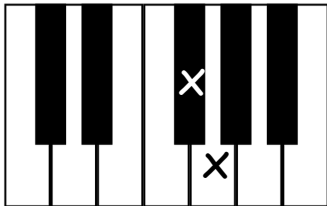
\_\_\_\_\_

# Whole and Half Steps

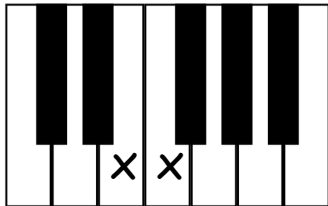
Circle one word under each picture that tells how far it is from one X to the next X.



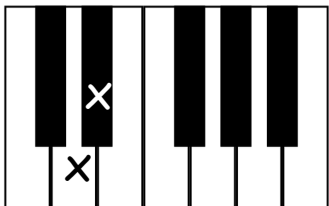
Whole Step  
Half Step



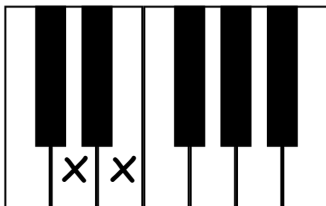
Whole Step  
Half Step



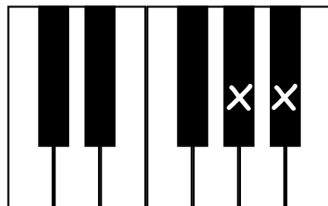
Whole Step  
Half Step



Whole Step  
Half Step



Whole Step  
Half Step



Whole Step  
Half Step