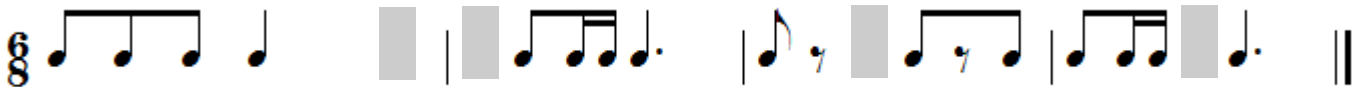


Theory Quiz

Keyboard Level 7

Rhythms

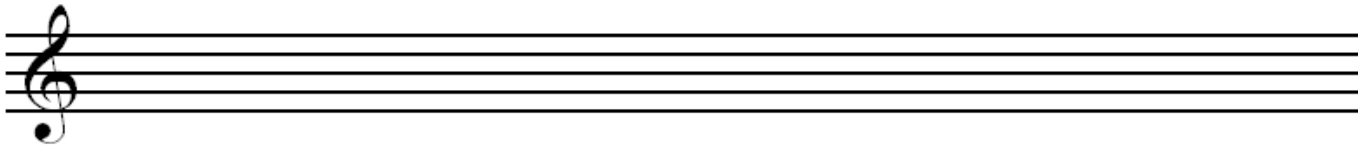
Each measure below can be completed by adding one note. Fill in an appropriate note or rest in each gray square below.



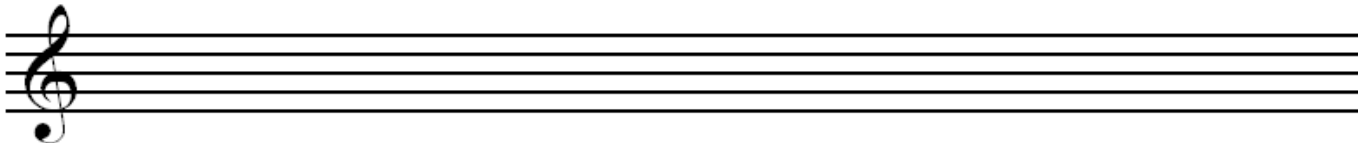
Scales

Write the given scales on the staff below. Use accidentals for sharp and flat notes—do not add a key signature.

E \flat Major



G natural minor



a harmonic minor



Key Signatures

Identify each major key signature below and list it's relative minor.



Major Key: _____
Relative Minor: _____



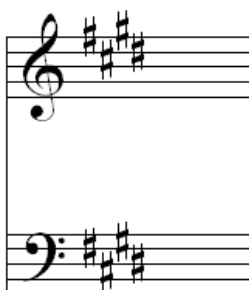
Major Key: _____
Relative Minor: _____



Major Key: _____
Relative Minor: _____



Major Key: _____
Relative Minor: _____



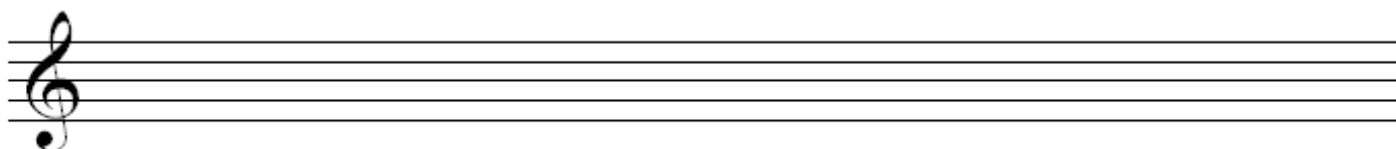
Major Key: _____
Relative Minor: _____



Major Key: _____
Relative Minor: _____

Double Accidentals

Write each note and accidental listed on the staff below. Next to it, draw a note that is an enharmonic equivalent.



F Double Sharp

B Double Flat

C Double Sharp

E Double Flat

Triads

Identify each triad. Triads may be major, minor, augmented or diminished.







Draw each triad on the staff, using accidentals if necessary. (Do not add a key signature).



B Major



D minor



F Augmented

Analysis

Identify each chord below as a I, IV, V, V7, ii or vi chord (be sure to look at your key signature!) Write your answers in the boxes below the chords.



Intervals

Identify each of the intervals below. Your answer should have a quality ("M" for major, "m" for minor or "P" for perfect) and a number. One example is given.



m3











Draw a second note to complete the intervals given below. All intervals are ascending. Use accidentals if necessary—do not add a key signature.



Minor 3rd



Perfect 5th



Minor 2nd



Major 6th



Perfect 4th



Major 7th