

Theory Quiz

Keyboard Level 3A (Treble Instruments)

Note Names

Write in the name of each note in the piece below. Be sure to identify any sharps or flats in the note names.

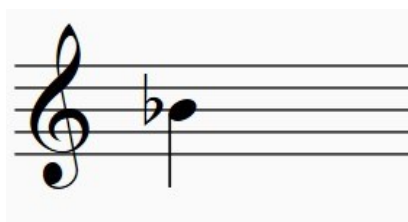
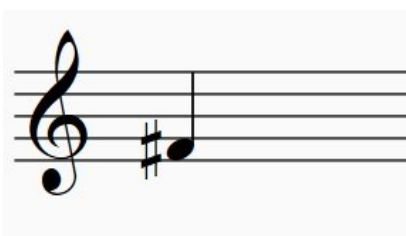
Minuet in G

Moderato

J.S. Bach

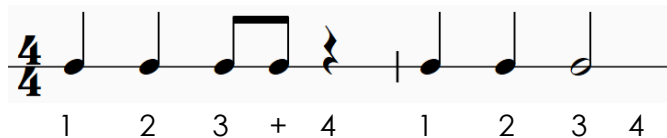


Draw the notes that are enharmonically equivalent to the notes below (they tell you to play the same pitch). Be sure to draw any accidentals correctly!



Counting

Write in the counting below each line. Example of correct answers:



Tempo & Time Signature

Minuet in G

Moderato

J.S. Bach



1. ____ The tempo for this piece is **Moderato**. This means:

A. Slow tempo

B. Moderate tempo

C. Fast tempo

The Time signature for this piece is $\frac{3}{4}$.

2. ____ The top number means:

A. 3 beats per measure

B. 3 notes per measure

C. 4 beats per measure

3. ____ The bottom number means:

A.  gets 4 beats

B.  gets 1 beat

C. 4 beats per measure

Terms and Symbols

Look at the circled symbols below. Put the letter of the correct answer in each blank.

5

9

13

mf

mp #1

p #2

ritardando #4

1. ____ The Italian term for Symbol #1 is
A. Mezzo Piano B. Mezzo Forte C. Piano
2. ____ The English definition for Symbol #1 is
A. Medium Loud B. Medium Soft C. Soft
3. ____ The Italian term for Symbol #2 is
A. Forte B. Piano C. Forte
4. ____ The English definition for Symbol #2 is
A. Soft B. Medium loud C. Medium soft
5. ____ The Italian term for Symbol #3 is
A. Staccato B. Tenuto C. Legato
6. ____ The English definition for Symbol #3 is
A. Smooth, connected B. Quick, lively C. Short, detached
7. ____ The English definition for Symbol #4 is
A. Gradually get softer B. Gradually get slower C. Gradually get faster

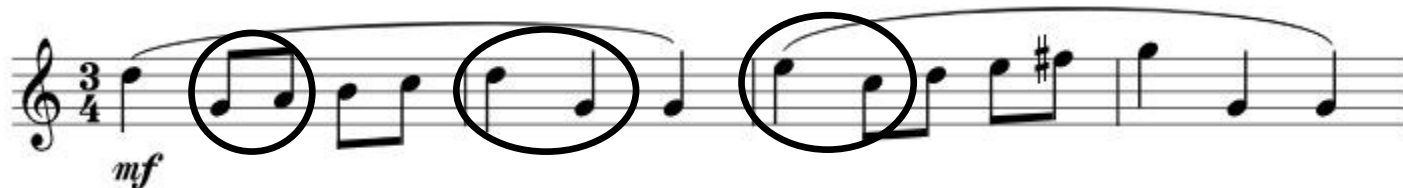
Intervals

Write in the name of the interval (ex. 2nd, 5th) next to each pair of circled notes.

Minuet in G

Moderato

J.S. Bach



Whole and Half Steps

Write "whole step" or "half step" next to each pair of circled notes.

