



## Minor Scales

---

Identify the major scale, then name and write each corresponding natural minor scale.

\_\_\_\_\_ Major



Relative Minor:

\_\_\_\_\_ natural minor



Parallel Minor:

\_\_\_\_\_ natural minor



## Seventh Chords

---

Identify each 7th chord as a Major, Dominant or Minor.



Major  
Dominant  
Minor



Major  
Dominant  
Minor



Major  
Dominant  
Minor



Major  
Dominant  
Minor

## Triads

---

Draw each triad on the staff, using accidentals if necessary. (Do not add a key signature). All triads should be written in root position.



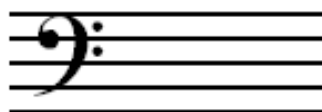
E Diminished



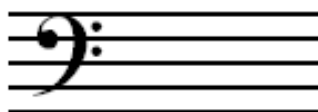
C Minor



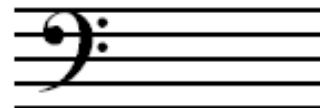
G Augmented



E $\flat$  Major



F Augmented



B Diminished

## Inversions

---

Draw each triad on the staff in the given inversion. Use accidentals if necessary. (Do not add a key signature.)



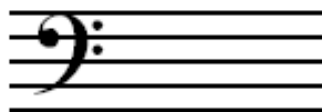
B Major  
1st Inversion



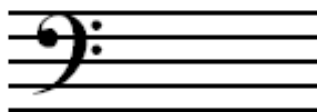
E Minor  
2nd Inversion



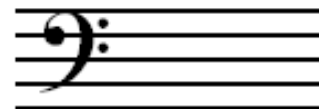
C Diminished  
1st Inversion



G Augmented  
1st Inversion



F Major  
2nd Inversion



B $\flat$  Minor  
2nd Inversion

## Intervals

Draw a second note to complete the intervals given below. **All intervals should be ascending.** Use accidentals if necessary. (Do not add a key signature.)



Perfect 4th



Diminished 5th



Minor 6th

Draw a second note to complete the intervals given below. **All intervals should be descending.** Use accidentals if necessary. (Do not add a key signature.)



Perfect 4th



Minor 3rd



Major 2nd

## Analysis

Identify each group of circled notes as a chord. Write your answer in the box below each measure using roman numerals. Be sure to check your key signature!