

# Theory Quiz

## Treble Voice Level 3

### Terms & Symbols

---

In each row of the table below, one blank has been filled in for you. Complete the other two so that each row has an Italian term, it's symbol and it's English definition.

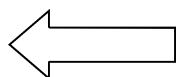
Italian Term	Symbol	English Definition
		medium loud
mezzo piano		
	<i>p</i>	
		loud

### Time Signatures

---

Explain what each number in this time signature means:

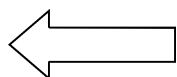
**3**



---

---

**4**



---

---

## Counting

---

Write in counting below each line.



## Ties and Slurs

---

Circle the symbol that appears in each example.



Tie

Slur



Tie

Slur



Tie

Slur

## Stem Placement

Circle each note below with a stem that is drawn **correctly**.



## Accidentals

Add an accidental to make each note on the staff match its description below.  
(Note: every note should have a symbol next to it, including natural notes.)



B flat      F sharp      B flat      A natural      D flat      D natural      G sharp      E flat

## Whole and Half Steps

Circle the word that describes the distance between each pair of notes.



Whole Step  
Half Step



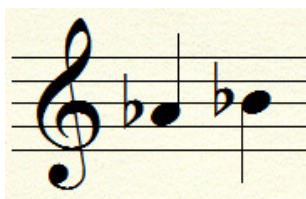
Whole Step  
Half Step



Whole Step  
Half Step



Whole Step  
Half Step



Whole Step  
Half Step

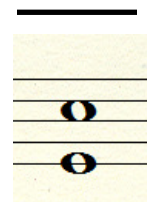
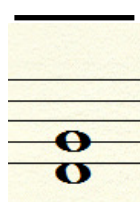
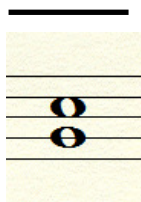
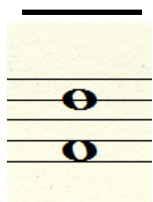
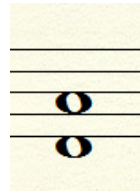
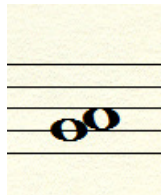


Whole Step  
Half Step

## Intervals

---

Write the name of each interval on the line below each picture (ex. 2nd, 3rd).



\_\_\_\_\_

\_\_\_\_\_

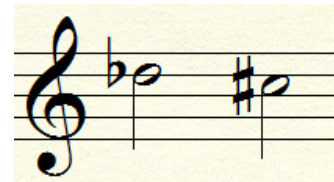
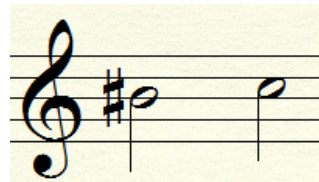
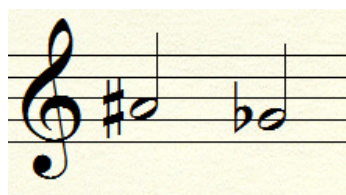
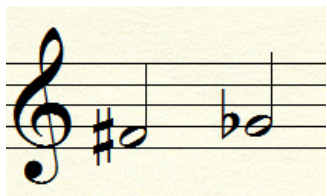
\_\_\_\_\_

\_\_\_\_\_

## Enharmonics

---

Circle the pairs of notes that are correct enharmonic equivalents (they tell you to sing the same pitch).



## Note Names

---

Write the name of each note on the lines under the pictures.



\_\_\_\_\_