

Theory Quiz

Keyboard Level 2

Notes & Rests

Complete each statement below. Draw the symbol of the note given in the box, then fill in the number of beats it gets in the blank.

A **quarter note**

gets _____ beat(s)

A **whole note**

gets _____ beat(s)

A **half note**

gets _____ beat(s)

A **dotted half note**

gets _____ beat(s)

A **half rest**

gets _____ beat(s)

A **whole rest**

gets _____ beat(s)

A **quarter rest**

gets _____ beat(s)

Accidentals

Draw a symbol next to each word on the left. Then draw a line to match it to a definition on the right.

Flat Sign

Raises a note by a half-step

Sharp Sign

Cancels a sharp or flat

Natural Sign

Lowers a note by a half-step

Definitions

Cross out two words that **do not belong** under each symbol.

p

f



piano
forte
loud
soft

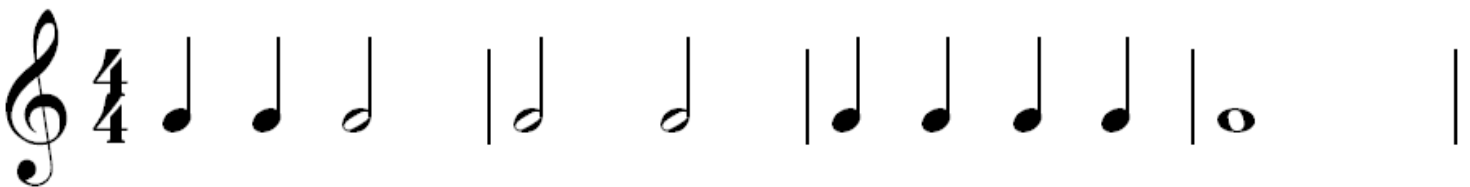
piano
forte
loud
soft

legato
staccato
detached
smooth

legato
staccato
detached
smooth

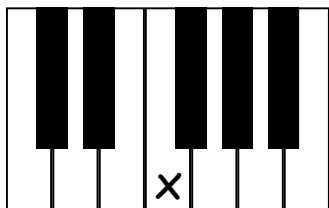
Counting

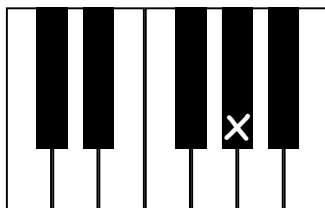
Write in counting below each line.

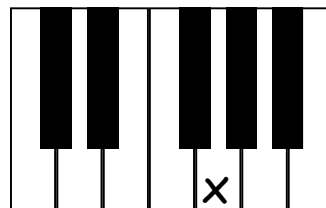


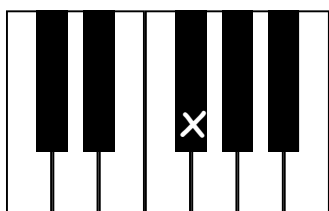
Key Names

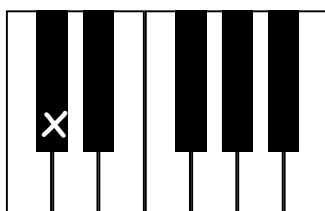
Write the name of each key on the line below each picture.

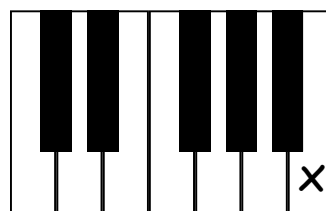






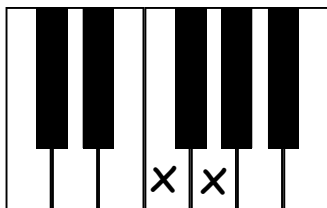




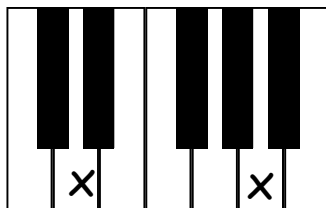


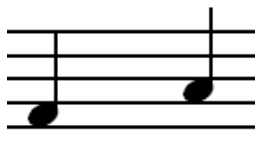
Intervals

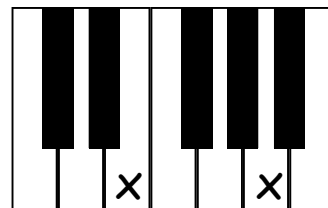
Write the name of each interval on the line below each picture (ex. 2nd, 3rd, etc.).







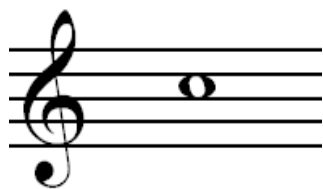


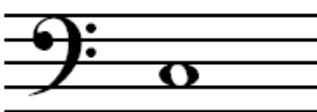


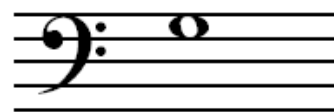


Note Names

Write the name of the note on the line under each picture.







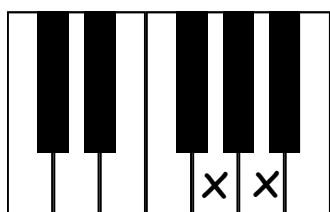




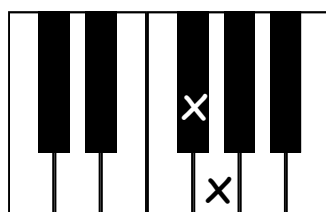


Whole and Half Steps

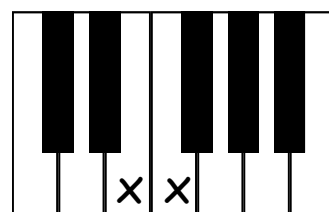
Circle one word under each picture that tells how far it is from one X to the next X.



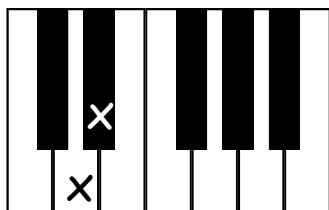
Whole Step
Half Step



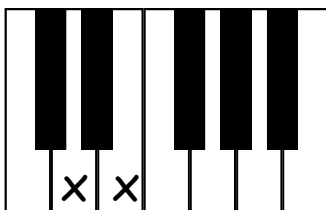
Whole Step
Half Step



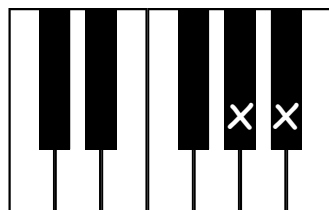
Whole Step
Half Step



Whole Step
Half Step



Whole Step
Half Step



Whole Step
Half Step