

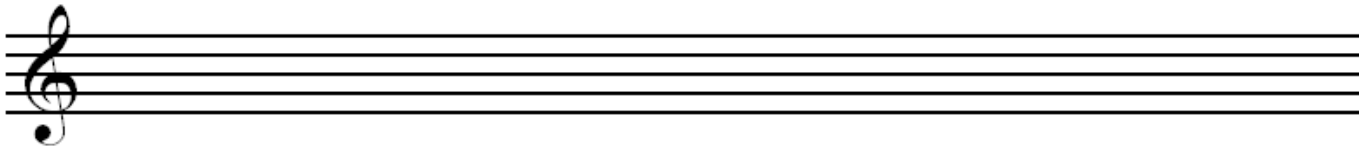
Theory Quiz

Level 10

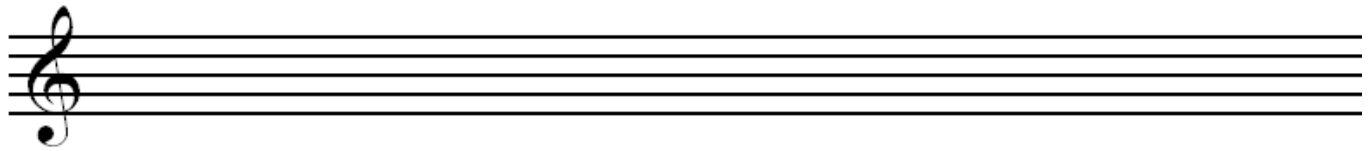
Scales

Write the given scales on the staff below. Use accidentals for sharp and flat notes—do not add a key signature.

D melodic minor (please draw ascending and descending scale)



F Chromatic (please draw ascending and descending scale)



G Dorian (ascending scale)



D Lydian (ascending scale)



Seventh Chords

Identify the root and quality of each of the 7th chords below (i.e. GM7 or Gm7). Chords may be major, dominant, minor, half-diminished or diminished.





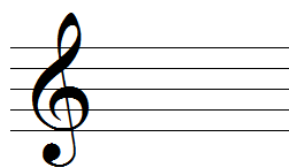




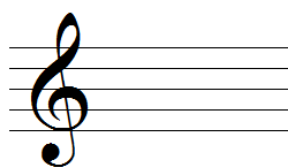




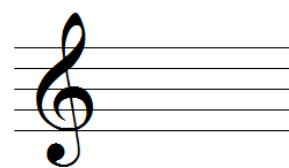
Write each of the following 7th chords in root position.



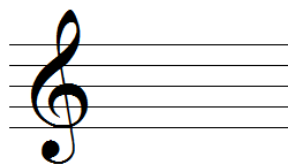
AM7



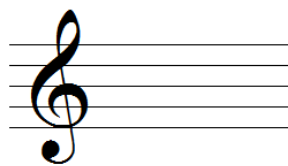
d°7



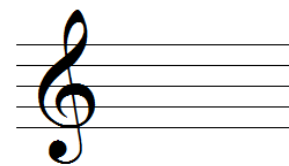
cm7



Bb7



g°7



Bm7

Key Signatures

Identify the key of the following excerpts. (If minor, identify natural, harmonic or melodic)



Musical excerpt 1, measures 49-52. The key signature has one sharp (F#). The melody in the right hand features a trill on the G4 note in measure 52, with fingering 2-1-2. The bass line consists of chords and single notes.



Musical excerpt 2, measures 53-56. The key signature has one sharp (F#). The melody in the right hand features a trill on the G4 note in measure 56, with fingering 2-3-5-2. The bass line consists of chords and single notes.

Excerpt #1: _____

À l'allemande



Musical excerpt 3, measures 1-4. The key signature has two sharps (F# and C#). The piece is marked *p*. The melody in the right hand features an 8-measure phrase in measure 1 and a trill on the G4 note in measure 4, with fingering 4-4-5-3. The bass line consists of chords and single notes.



Musical excerpt 4, measures 5-8. The key signature has two sharps (F# and C#). The melody in the right hand features an 8-measure phrase in measure 5 and a trill on the G4 note in measure 8, with fingering 4-4-5-3. The bass line consists of chords and single notes.

Excerpt #2: _____

Analysis

Identify the key signature and each chord in the hymn below by filling in the blanks. Draw an X through any non-harmonic tones.

This piece is in the key of _____

Ornamentation

Match each symbol on the left to its name in the middle and realization on the right.



Turn



Trill



Mordent

