

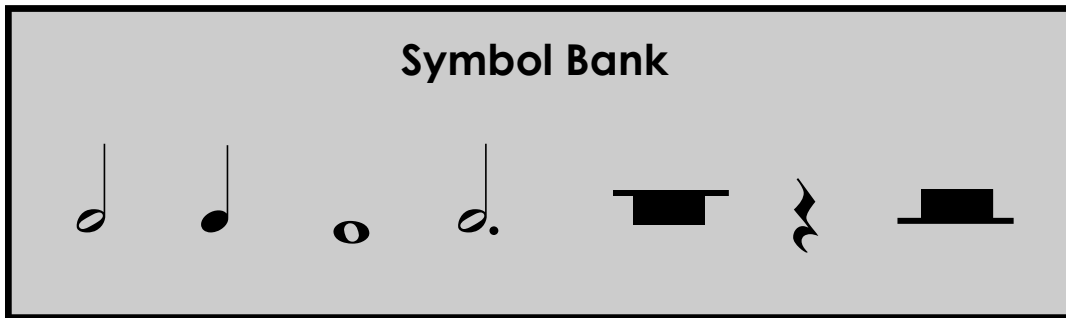
# Theory Quiz

## Keyboard Level 1

### Notes & Rests

---

Complete each statement below. Draw the symbol of the note given in the box, then fill in the number of beats it gets in the blank. All notes are shown in the symbol bank.



A **quarter note**

gets \_\_\_\_\_ beat(s)

A **whole note**

gets \_\_\_\_\_ beat(s)

A **half note**

gets \_\_\_\_\_ beat(s)

A **dotted half note**

gets \_\_\_\_\_ beat(s)

A **half rest**

gets \_\_\_\_\_ beat(s)

A **whole rest**

gets \_\_\_\_\_ beat(s)

A **quarter rest**

gets \_\_\_\_\_ beat(s)

## Symbols

---

Draw a **circle** around the **treble clef** symbol.

Draw an **X** through the **bass clef** symbol.

Draw an **arrow** pointing to a **repeat sign**.

Draw a **triangle** around a **bar line**.

Draw a **square** around the **time signature**.



## Note Direction

---

Circle one word under each picture that tells which direction the notes are moving.



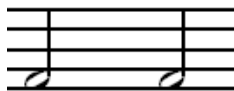
Up  
Down  
Repeat



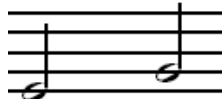
Up  
Down  
Repeat



Up  
Down  
Repeat



Up  
Down  
Repeat



Up  
Down  
Repeat

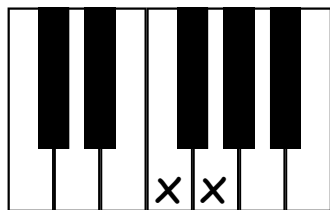


Up  
Down  
Repeat

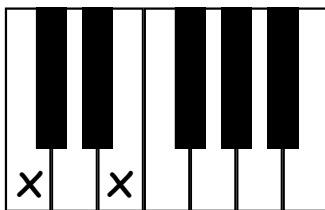
## Steps and Skips

---

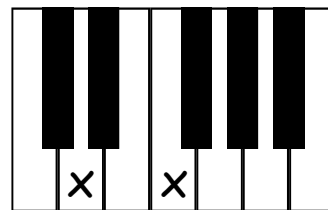
Circle one word under each picture.



Step  
Skip



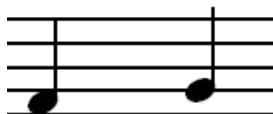
Step  
Skip



Step  
Skip



Step  
Skip



Step  
Skip



Step  
Skip

## Dynamic Symbols

---

Cross out two words that **do not belong** under each symbol.

*f*

forte  
piano  
loud  
soft

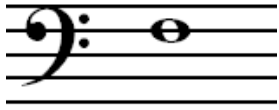
*p*

forte  
piano  
loud  
soft

# Note Names

---

Write the name of the note on the line under each picture.



\_\_\_\_\_



\_\_\_\_\_



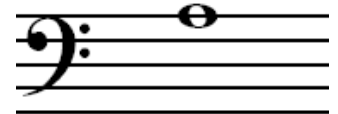
\_\_\_\_\_



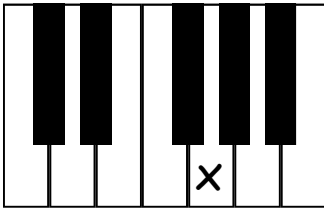
\_\_\_\_\_



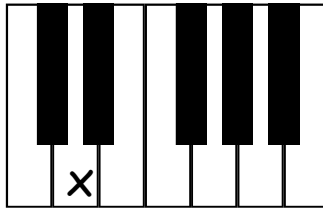
\_\_\_\_\_



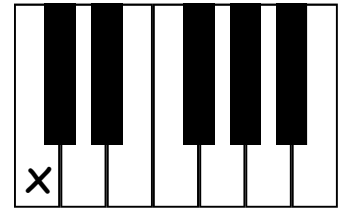
\_\_\_\_\_



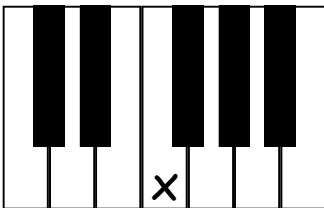
\_\_\_\_\_



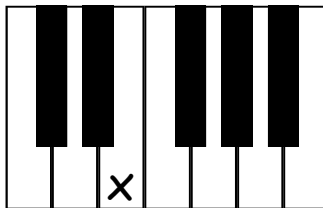
\_\_\_\_\_



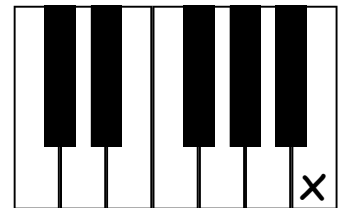
\_\_\_\_\_



\_\_\_\_\_



\_\_\_\_\_



\_\_\_\_\_